

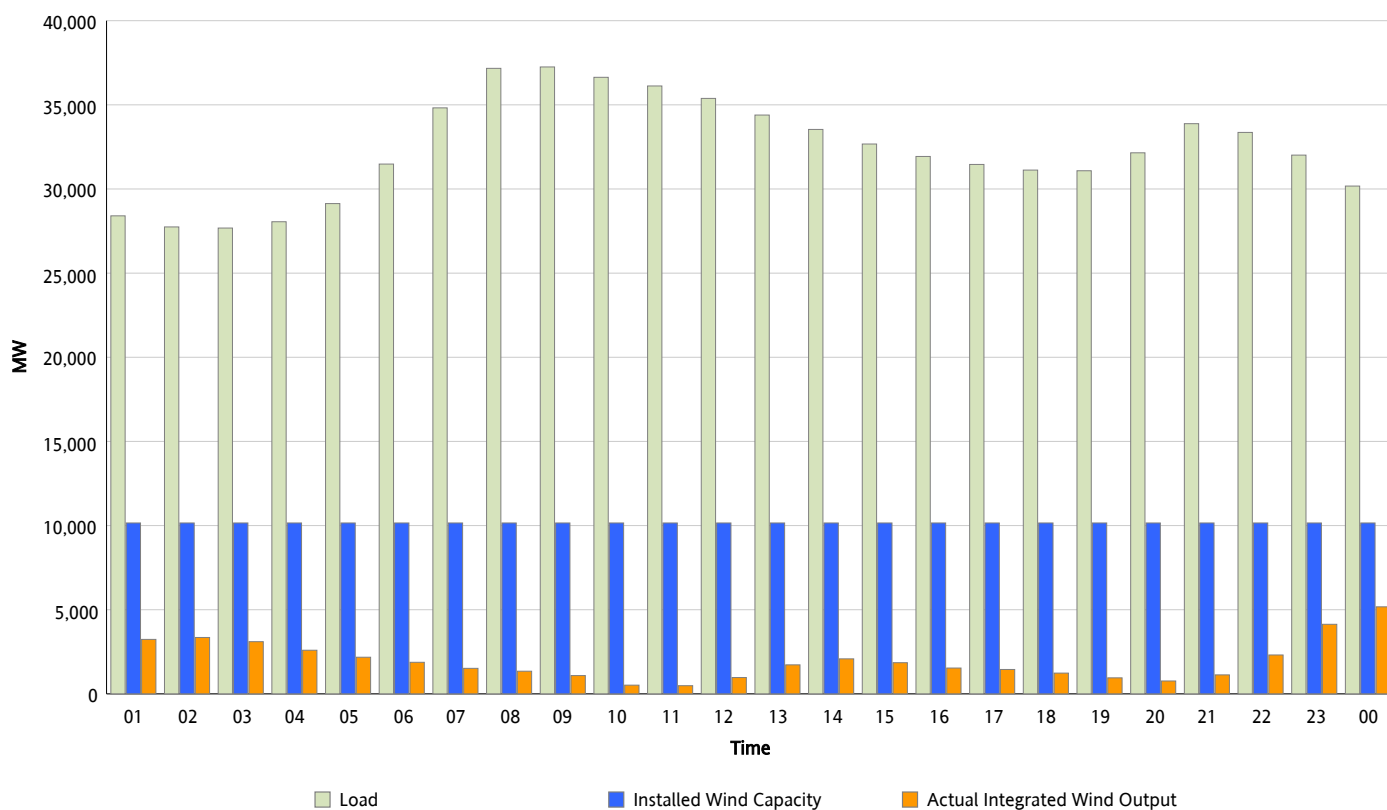


ERCOT Grid Operations

Wind Integration Report : 03/11/2013

Peak Load	37,251 MW
Load Peak Hour (HE)	09
Wind Over Peak	1,087 MW
Wind Record 02/09/13	9,481 MW
Max Wind Value*	5,503 MW
Wind Peak Time	00:00
Wind Integration %	18.67 %

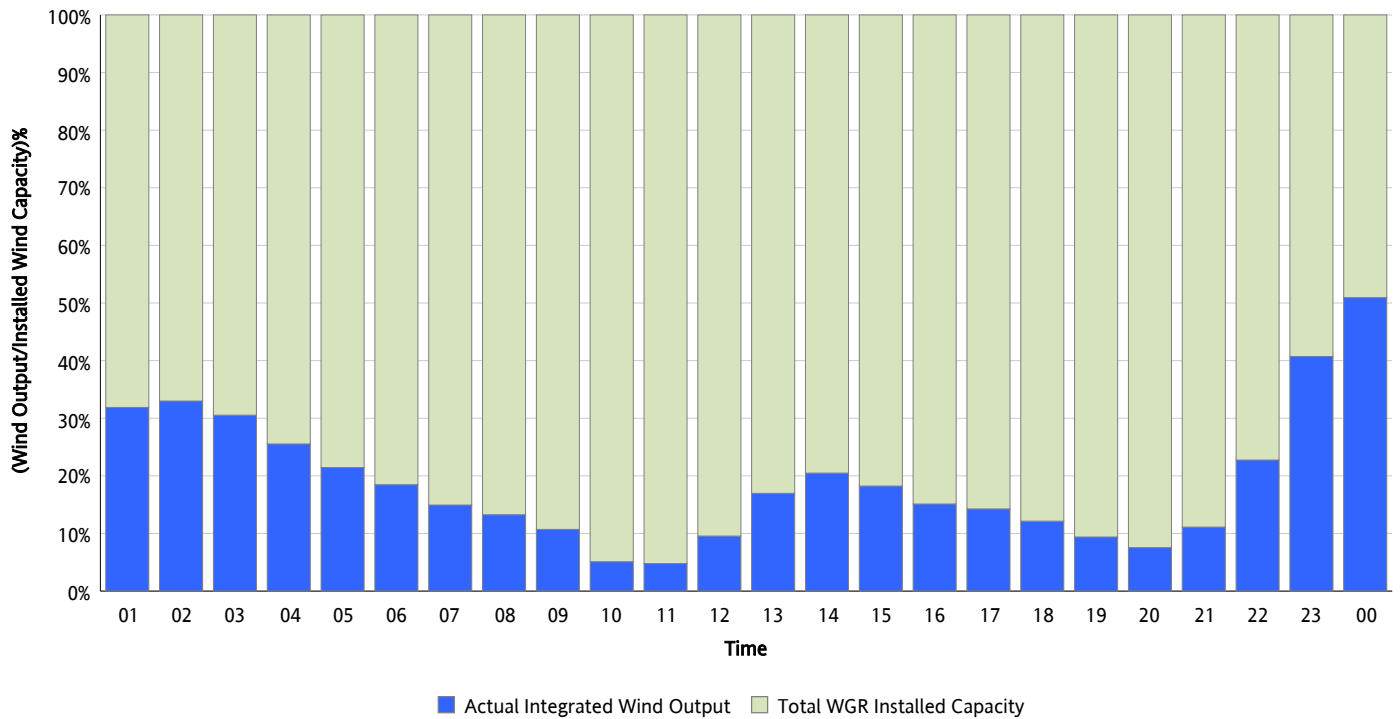
Hourly Average Actual Load vs. Actual Wind Output
03/11/2013



* Wind Record and Wind Max represent instantaneous values and the rest of the values are integrated over the hour

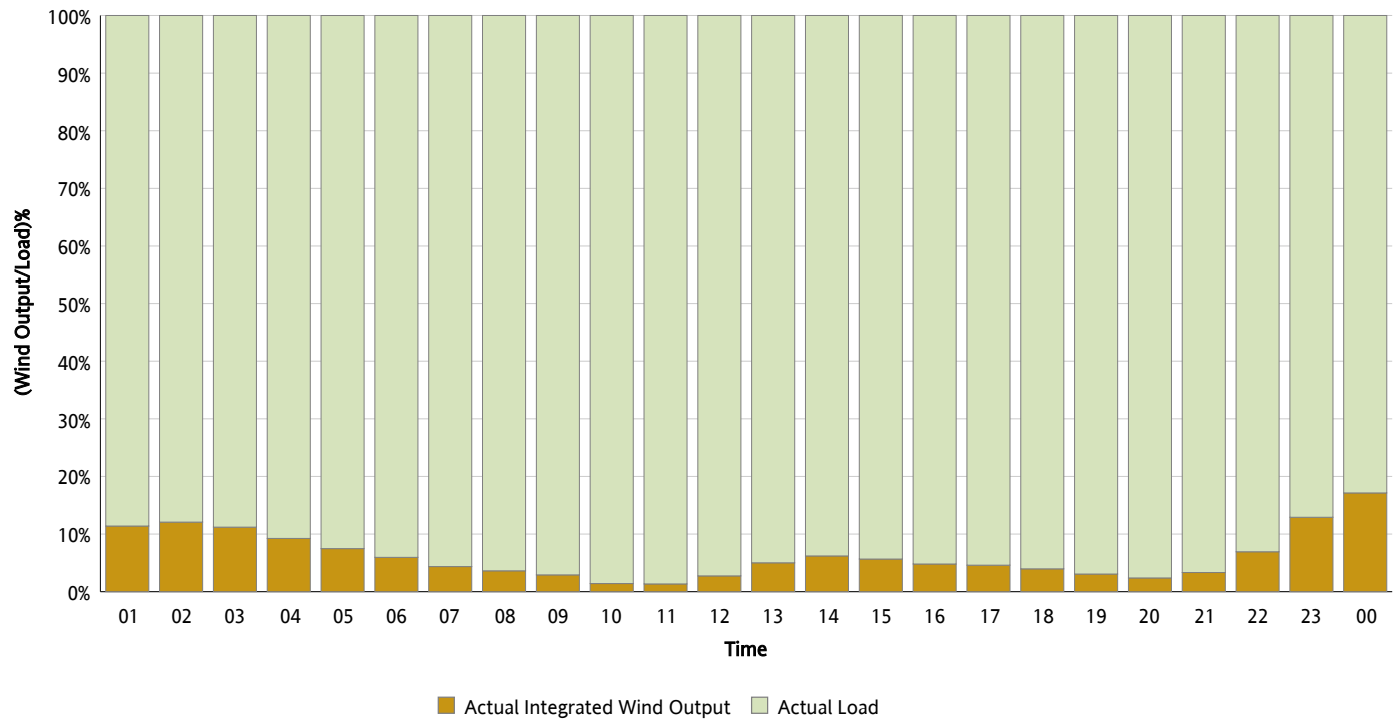
Actual Wind Output as a Percentage of the Total Installed Wind Capacity

03/11/2013



Actual Wind Output as a Percentage of the ERCOT Load

03/11/2013



ERCOT Load vs. Actual Wind Output

03/04/2013 - 03/11/2013

